



පළාත් අධ්‍යාපන දෙපාර්තමේන්තුව - උතුරු මැද පළාත  
மாகாணக் கல்வித் திணைக்களம் - வட மத்திய மாகாணம்  
DEPARTMENT OF EDUCATION - NORTH CENTRAL PROVINCE



ද්‍රව්‍ය

8

Second term test-2016  
Science answers

පාසලේ නම : .....

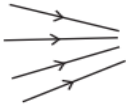
ශිෂ්‍ය/ශිෂ්‍යාවගේ නම/ ඇතුළත්වීමේ අංකය : .....

කාලය : පැය 02.

Answers

01. Sinharaja,
02. Indian Krait
03. Biological Hazards
04. W
05. Coal
06. Pressure
07. CO<sub>2</sub>
08. Stratosphere
09. Hydrometer
10. 500 Nm<sup>-2</sup>
11. Kaolin
12. Nitrogen
13. guitar
14. Mono sodium glutamate
15. Compass
16. Hibernation
17. Daluk " Nawahandi , pathok.
18. Only A and C

19. 1



20. Damana and talawe

01 Ai. p- Dynamo

Q - Turbine

ii. Potential energy / kinetic energy

iii. work = force x displacement of the force

$$= 500\text{N} \times 700\text{m}$$

$$= 350000\text{J} / 350\text{KJ}$$

B. i. Brackish water aquatic environment - lagoons, estuaries

Marine water aquatic environment - sea, ocean

ii. Adult/ larva/ eggs

C. i. H/O (hydrogen, oxygen)

02. a. i. any correct answer

ii. mercury

b. i. C, Al, Cl, Na,

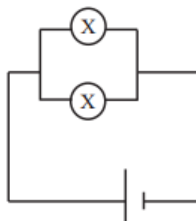
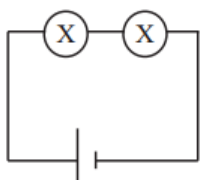
ii. any correct answer

c. i. any correct answer

ii. expansion

03. A. i. Series and parallel

ii.



iii. parallel

B. i.  $\frac{240V}{24V} = 10$  Bulbs

C. i. repulsion, attraction, repulsion

04. A i. Shape, colour, size, leaf base, tip, venation

ii. Reticulate / net – mango, bo etc.

Parallel – Coconut, Zea maize etc.

B i. කරුමුල්

ii. help for the branches, absorb minerals and water

iii carrot, beet, Radish

iv. Storing of food

v. Orchid

vi. Areal roots

C- for correct answer

5. A. 1. Hurricane, typhoon, tornado, නිවර්තන සුළං

ii. removing of trees or branches which can be danger/ preparation of a ආපදාමල්ලක් සුදානම් කරගැනීම

B. i. lightening is an electronic discharge

ii. Direct lightening, side lightening, touch lightening, step lightening.

iii. do not stand on bear floor when there is lightening.

Do not travel in an open vehicle

Do not touch metals

Do not sleep on the floor.

C. i. පරිවර්තනය

සසල අංශුමය - කාබන්අංශු / දුවිලි / ඊයම් / කාමිනාශකඅංශු

ව්‍යුමය - Co / CO<sub>2</sub> / SO<sub>2</sub> / NO<sub>2</sub>

06. A. i. අලෝකය නිකුත් කරනවස්තු

ii. නොපෙනේ

හේතුව - අලෝකය සරල රේඛීයව ගමන්කරයි

iii. පාරදෘශ්‍ය - ජලේන්වීදුරු, අවර්ණ ඉටි රෙදි ඇදී , පාරභාෂක - මල්වීදුරු, තෙල්කඩදාසි

iv. අලෝක වර්තනය

B. i. 20 - 20000 Hz

ii. Samuel Vose

iii. Solid