

## Second Term Test- 2016

### Information and Communication Technology (80) – Grade 11

#### Marking scheme (English medium)

#### Part I

1) 3	11) 4	21) 3	31) 4
2) 2	12) 2	22) 2	32) 4
3) 4	13) 4	23) 3	33) 1
4) 4	14) 3	24) 4	34) 4
5) 1	15) 3	25) 1	35) 2
6) 2	16) 1	26) 2	36) 3
7) 3	17) 4	27) 2	37) 3
8) 2	18) 3	28) 1	38) 3
9) 2	19) 2	29) 3	39) 3
10) 2	20) 3	30) 3	40) 2



ii)

- Get a hardware or software firewall
- Use network login accounts in order to access shared resources
- Use malware protection
- Operating system and software patch updates on regular basis (any of 2) (02 marks)

iii) - Star Topology - Ring Topology (02 marks)

iv) - Network Interface Card (NIC)

- Switch /hub
- Router
- Modem (04 marks)

(03)

i) = SUM (B2:D2) (02 marks)

ii) = E2 \* D8 (02 marks)

iii) = SUM ( E2 : E6) (02 marks)

iv) currency (02 marks)

Select the cell range → format cells → select number → currency

Set the currency into Rupees and required decimal places → Click on Ok.

v) = MAX (E2 : E6) (02 marks)

(04)

i) Manual System

- More errors are raised
- Less efficient
- Require large space for store data
- Less security

Automatic System

- Errors are minimal and more accurate
- More efficient
- Require less space for store data
- More security

(any of 2) (02 marks)

ii) System Development Life Cycle (SDLC) (02 marks)

iii) – Identification of requirements

- Designing the solution
- Coding of the solution
- Testing and debugging
- Deployment of the system
- Maintenance of the system

(any of 2) (02 marks)

-

- iv) – Observations  
 - Interviews  
 - Questionnaires  
 - Prototyping  
 - Document Sampling Collection  
 - Group Discussion (any of 2)
- v) a – Waterfall Model (01 mark)  
 b – Iterative Incremental Model (01 mark)

(05)

- i) A Database is a collection of organized data (01 mark)  
 ii) Storing the same data in several tables is called as Data Redundancy. (01 mark)

Disadvantages of Data Redundancy:

- Data inconsistency  
 - Less efficiency (Decrease efficiency)  
 - Less accuracy (Decrease accuracy) (any of 2) (02 marks)

iii) a)

IndexNo –Text or Number (Integer)

Name – Text

DOB – Date / Time

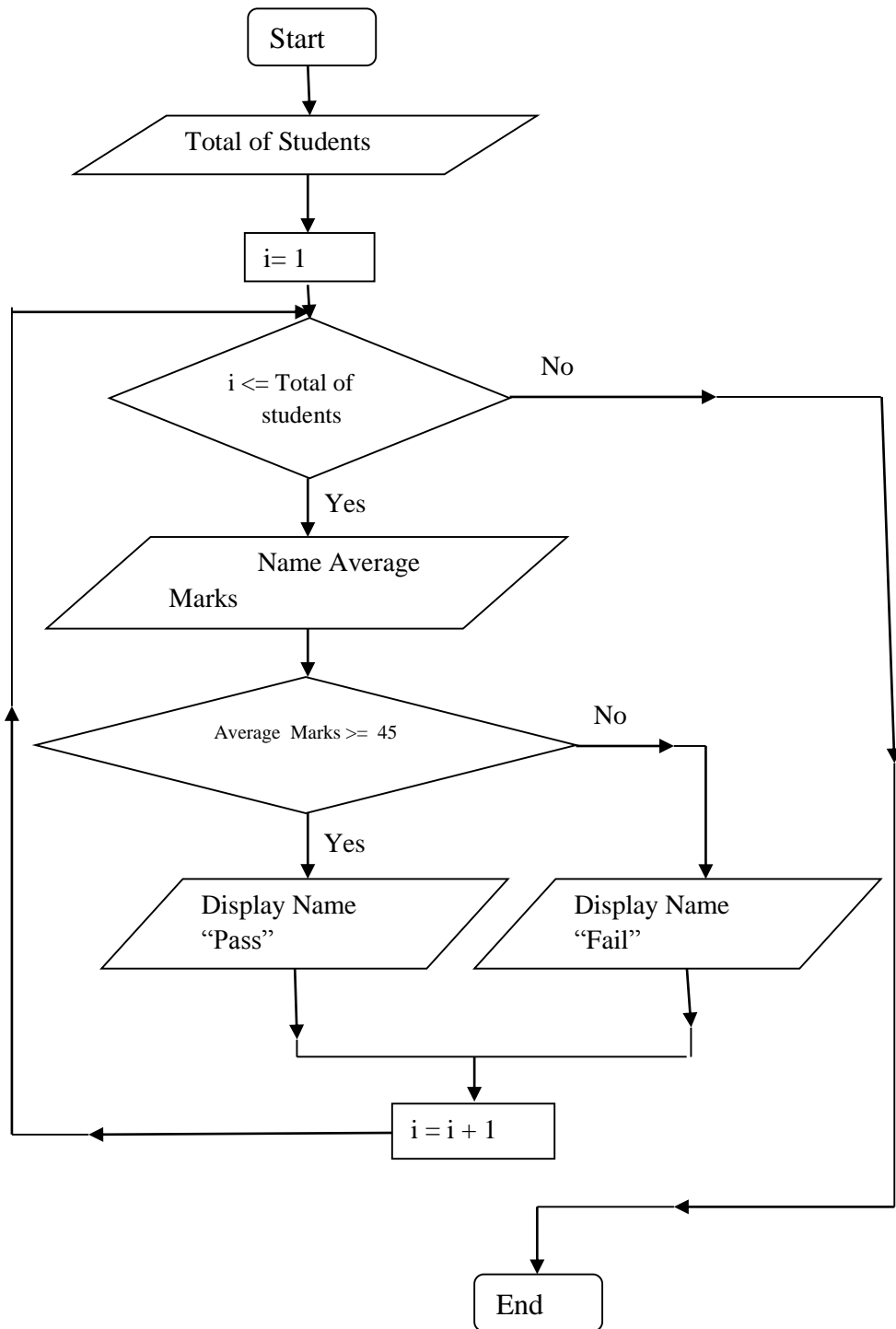
Sex - Text , Yes/No (02 marks)

b) Saman's IndexNo : 4588

<u>Subjects</u>	<u>Marks</u>	
80 – Information & communication Technology	56	
32 – Mathematics	67	
40 – Science	55	
30 – Sinhala	48	(02 marks)

c) One – to – Many Relationship (02 marks)

(06) i)



(05 marks)

ii) a – Total sales

b – P

c – Total sales

d – Total commissions

e – 1